

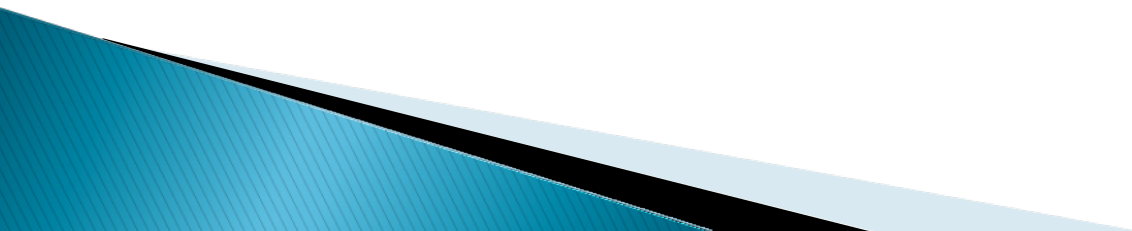
Approaches to Health Unit Accountability

Larry Stinson
Director, Public Health Programs

Accountability

Process whereby those to whom authority has been delegated must justify, explain, or defend their actions to a superior authority.

Board of Health Strategic Directions

1. Pursue one facility
 2. Continue to meet our mandate
 3. Invest in human resource excellence
 4. Build on our leadership role
 5. Expand existing and build new strategic partnerships
 6. Leverage information and technology
- 

Reproductive Health (Manager:)

To enable individuals and families to achieve optimal preconception health, experience a healthy pregnancy, have the healthiest newborn(s) possible, and be prepared for parenthood.

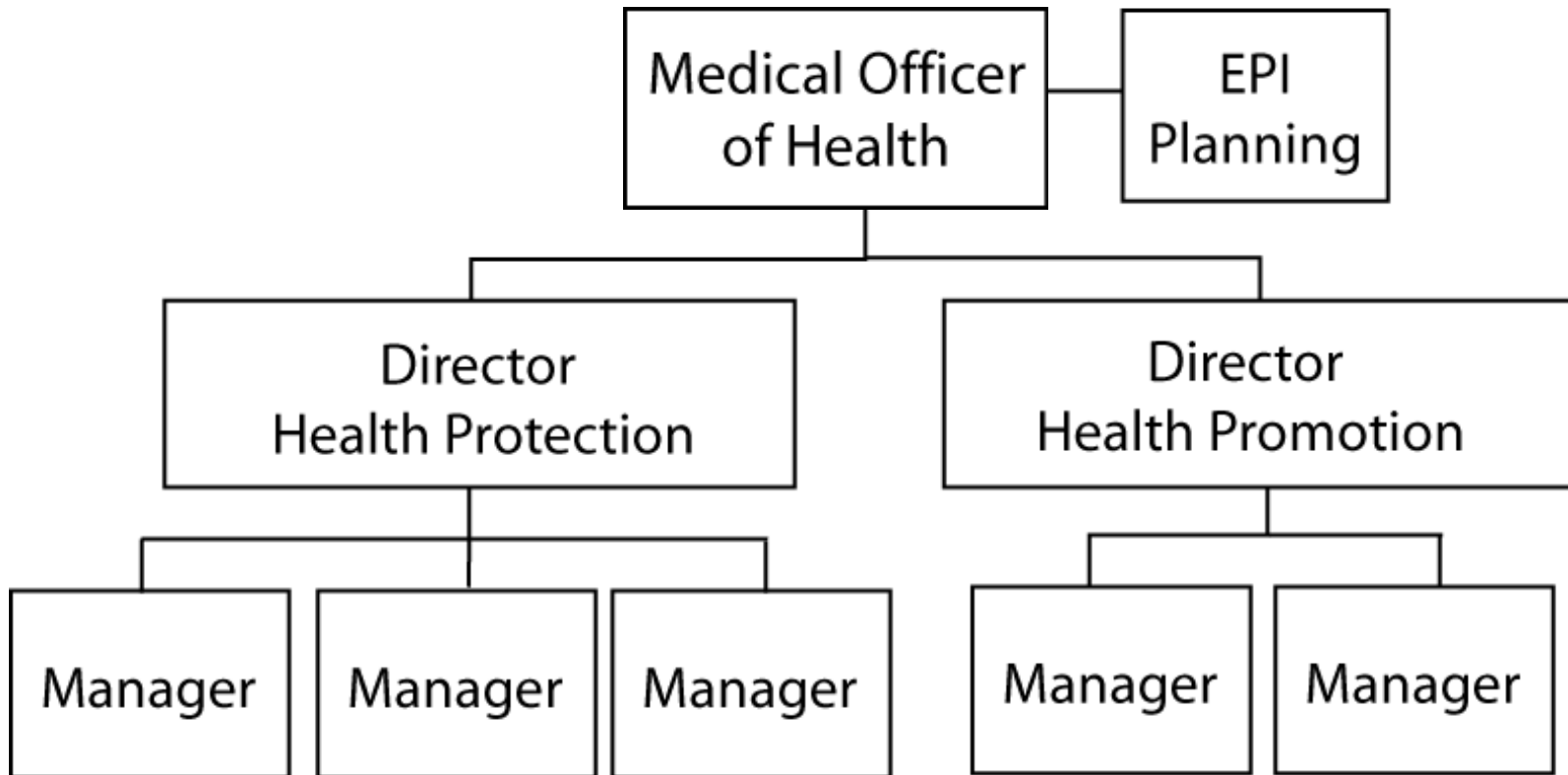
Requirement	Status				Comments
Assessment and Surveillance					
1. The board of health shall conduct epidemiological analysis of surveillance data, including monitoring of trends over time, emerging trends, and priority populations, in accordance with the <i>Population Health Assessment and Surveillance Protocol, 2008</i> (or as current) in the areas of: <ul style="list-style-type: none"> • Preconception health; • Healthy pregnancies; • Reproductive health outcomes; and • Preparation for parenting. 	↑	↑	↑	✓	<p>An extensive list was developed of Reproductive health indicators with a compilation of base line data and data sources.</p> <p>Teen Prenatal Supper Club Evaluation report has been disseminated to Peterborough Family Resource Centre (our partner agency in this initiative). Findings were also shared with Teen Prenatal Educators from Central East Region.</p> <p>Staff participated in a teleconference to receive an update on BORN (Better Outcomes Registry and Network). With the support of the Ministry of Health and Long-term Care, the five founding agencies of BORN Ontario (Ontario Maternal Multiple Marker Screening, Fetal Alert Network, Ontario Midwifery Program, Niday Perinatal Database and Ontario Newborn Screening) are integrating their data into one accurate and timely maternal-child registry to form an authoritative information system.</p>

Status Legend: ✓ = Compliant ↑ = On Target ∅ = Partially Compliant ⓘ = Compliant to Date × = Non Compliant

Indicators

- ▶ ✓ = Compliant
- ▶ ↑ = On Target
- ▶ ∅ = Partially Compliant
- ▶ 📅 = Compliant to Date
- ▶ ✕ = Non Compliant

Pre-2010



A Look at the OPHS and Protocols Across Various Dimensions

OPHS

- ▶ Goals
- ▶ Societal Outcomes
- ▶ Board of Health Outcomes
- ▶ Requirements

○ Populations

- Infants
- Children
- Youth
- Adults
- Seniors

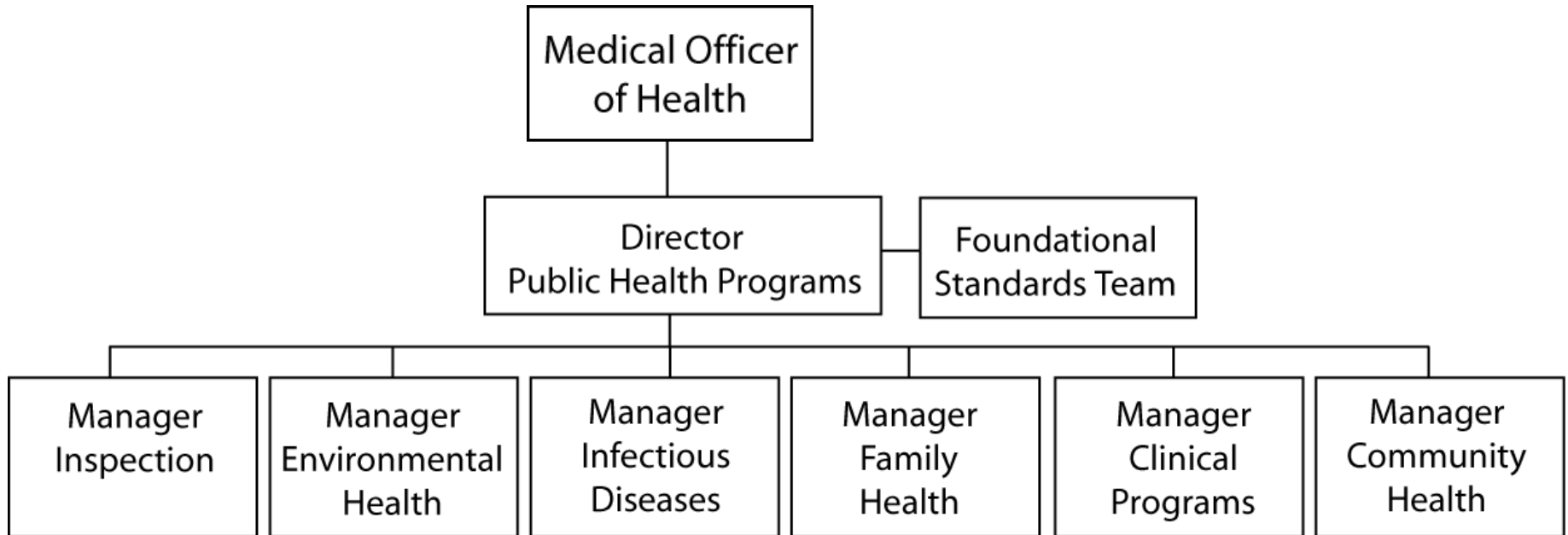
○ Settings

- Day Nurseries
- Elementary Schools
- High Schools
- Universities & Colleges
- Workplaces

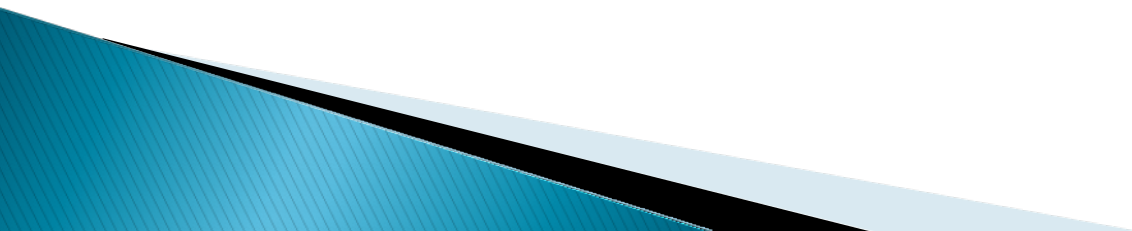
○ Public Health Functions

- Assessment and Surveillance
- Health Promotion and Policy Development
- Disease Prevention
- Health Protection

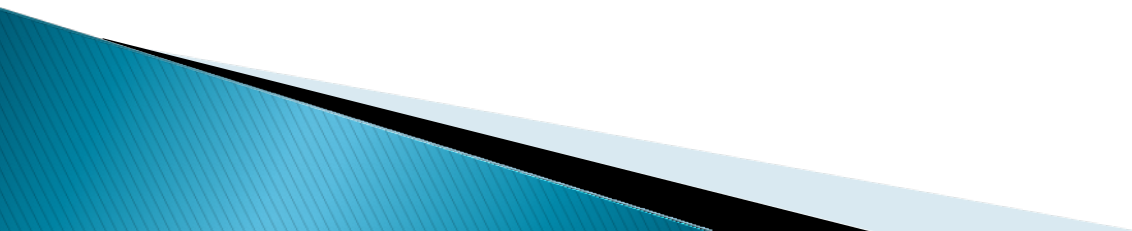
Post 2010



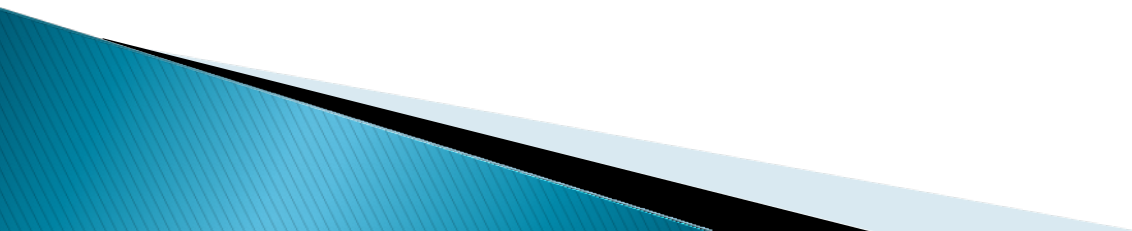
Planning for OPHS

- ▶ Priority population theme discussions
 - ▶ Logic models for standard
 - ▶ Operational plans based on requirements
 - ▶ Mechanisms for horizontal collaboration
- 

Staff Feedback

- ▶ Enhanced integration/collaboration
 - ▶ Better link with Foundational Standard
 - ▶ Clarity of expectations
- 

Limitations

- ▶ “Best” models for planning and structure
 - ▶ Changing environment
 - ▶ Investment in accountability measurement and reporting
- 

“Accountability is to public governance and management what competition is to the marketplace.”

Peter Aucoin